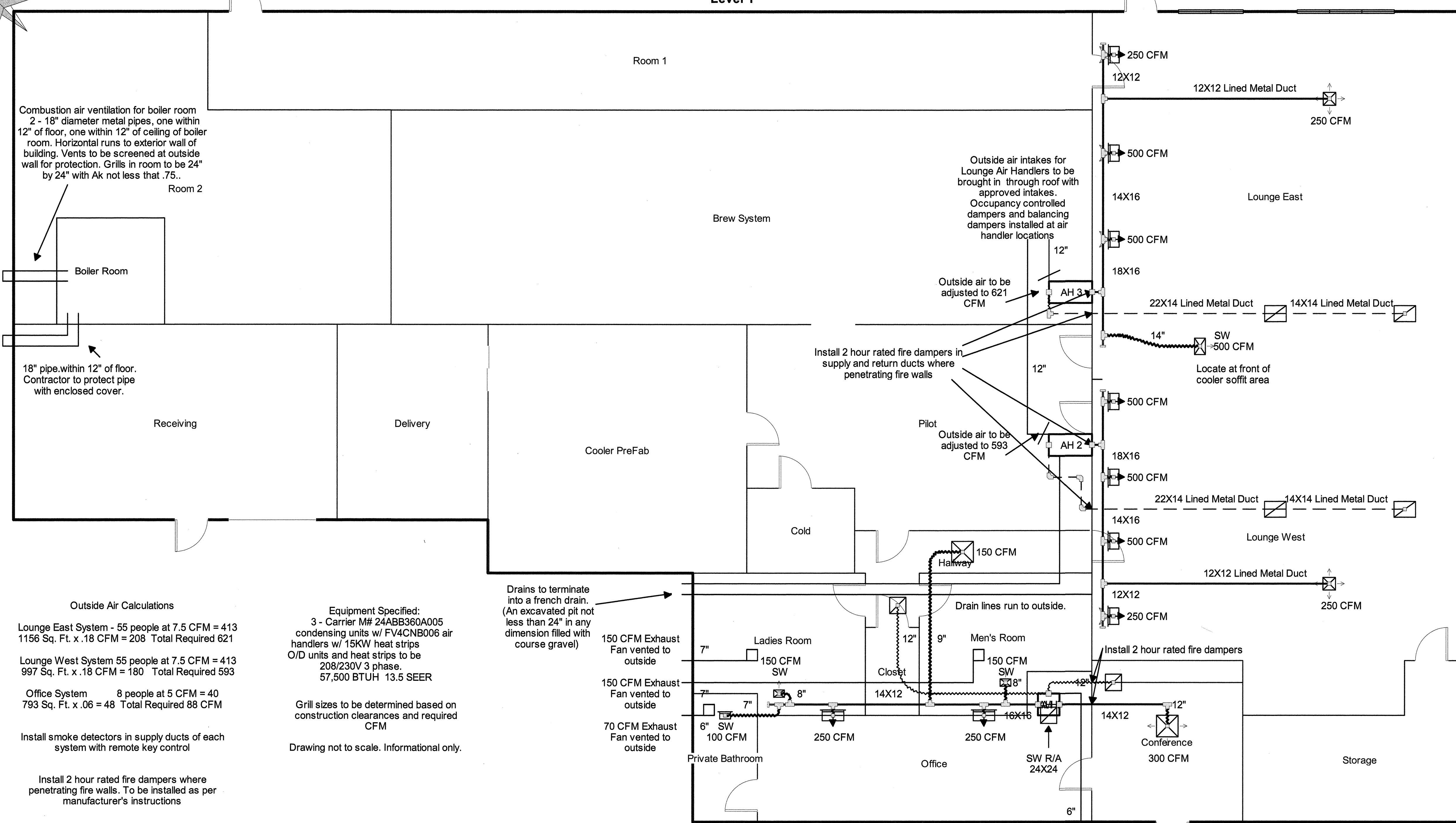


Level 1



Outside Air Calculations

Lounge East System - 55 people at 7.5 CFM = 413
1156 Sq. Ft. x .18 CFM = 208 Total Required 621

Lounge West System 55 people at 7.5 CFM = 413
997 Sq. Ft. x .18 CFM = 180 Total Required 593

Office System 8 people at 5 CFM = 40
793 Sq. Ft. x .06 = 48 Total Required 88 CFM

Install smoke detectors in supply ducts of each system with remote key control

Install 2 hour rated fire dampers where penetrating fire walls. To be installed as per manufacturer's instructions

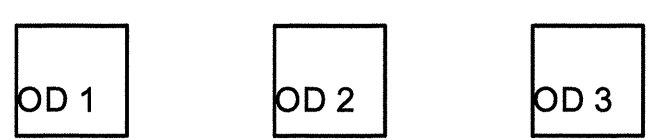
Ductwork to be constructed of R6 fiberglass and flex duct. with exception of open duct runs in lounge area where specified to be metal duct lined with R6 insulation. Ducts to be sealed with mastic at all connections.

Equipment Specified:
3 - Carrier M# 24ABB360A005 condensing units w/ FV4CNB006 air handlers w/ 15KW heat strips O/D units and heat strips to be 208/230V 3 phase, 57,500 BTUH 13.5 SEER

Grill sizes to be determined based on construction clearances and required CFM

Drawing not to scale. Informational only.

Drains to terminate into a french drain. (An excavated pit not less than 24" in any dimension filled with course gravel)



Outdoor units to be installed on rooftop in agreed upon location. Units to be installed on approved roof racks secured and sealed per manufacturers installation instructions.

04C032408 T+B EC1301188
MICHAEL POWMAN
3/27/15
HERS/RATER

Job #:
Performed for:
De Bine Brewery
993 Florida Avenue
Palm Harbor, FL

Dunedin Refrigeration
228 Douglas Avenue
Dunedin, FL 34698
Phone: 727-733-8446 Fax: 727-736-4593
www.dunedinrefrigeration.com mike@dunedinrefrig...

Scale: 1 : 172
Page 1
Right-Suite@ Universal 2015
15.0.17 RSU02550
2015-May-27 09:17:33
...3 Florida Avenue Palm Harbor.rup