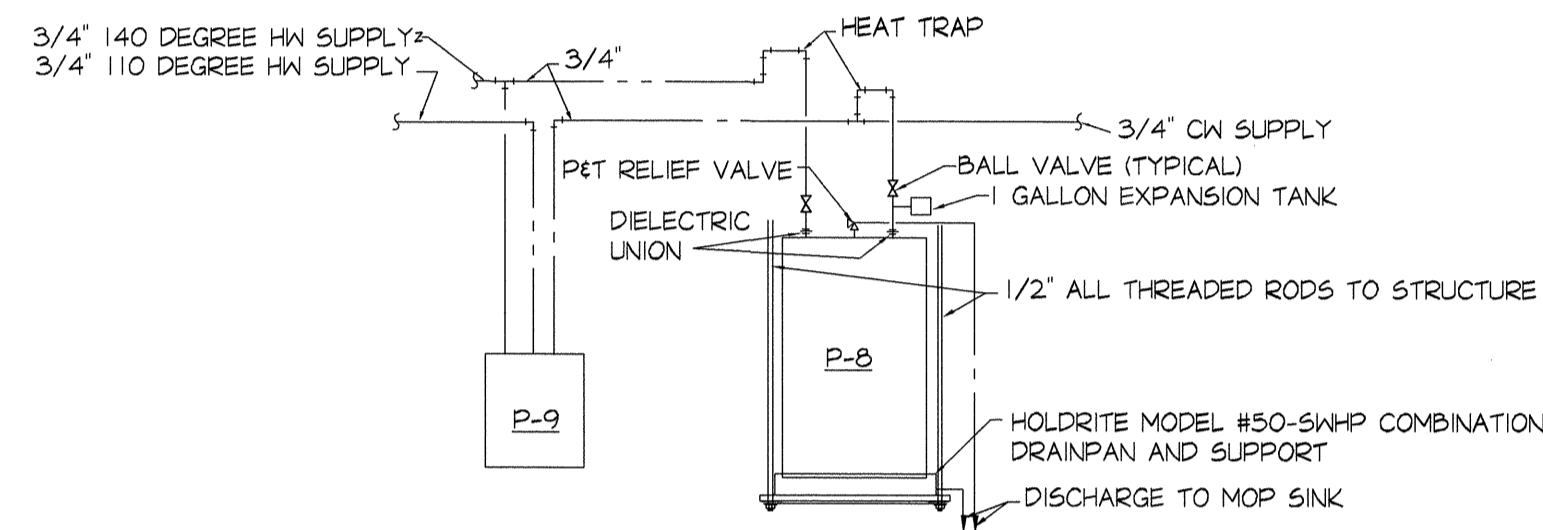


PLUMBING LEGEND	
WASTE PIPING	----
VENT PIPING	----
COLD WATER PIPING	----
HOT WATER PIPING	----
STORM PIPING	---
GAS PIPING	G
WASTE	W
VENT	V
VENT THRU ROOF	VTR
COLD WATER	CW
HOT WATER	HW
HOT WATER RETURN	HWR
ROOF DRAIN	RD
RAIN LEADER	RL
OVERFLOW ROOF DRAIN	ORD
OVERFLOW RAIN LEADER	ORL
HOSE BIBB	HB
AUTOMATIC AIR VENT	AAV

MARK	OUTLET SIZE	STRAINER SIZE	MANUFACTURER'S NUMBERS			NOTES
			JOSAM	WADE	ZURN	
FD-1	3"	8'X8"	30000-5	W-1100-G	Z-415-5	NICKEL BRASS TOP
FD-2	4"	48'X12"	39240	2920	EQUAL	PROVIDE WITH ONE CENTER AND TWO END EXTENSIONS WITH EACH DRAIN. PROVIDE END CAPS AT BOTH ENDS OF TOTAL DRAIN
FD-3	4"	7'DIA.	30000-E1	W-1100-ER	Z-415-1	NICKEL BRASS TOP MOUNT WITH TOP OF RIM FLUSH WITH FLOOR
FD-4	3"	12'X12"	49033A5	W-9143	EQUAL	PROVIDE WITH HALF GRATE
FD-5	2"	6'X6"	30000-5	W-1100-G	Z-415-5	NICKEL BRASS TOP
CO-1	SEE PLANS	---	58360	EQUAL	EQUAL	NICKEL BRASS TOP
CO-2	SEE PLANS	---	58680/ 58490-20	EQUAL	EQUAL	MOUNT IN 12'X12'X4" CONC. PAD IF LOCATED IN UNPAVED AREA

P-NO	FIXTURE DESCRIPTION	MOUNTING HEIGHT	MIN. CONNECTIONS			SPECIFICATION					NOTES	
			WASTE	CW	HK	MANUFACTURER	FIXTURE	TRIM	WASTE	TRAP		SUPPLY
P-1	WATER CLOSET FLOOR MOUNTED FLUSH TANK 1.28 GAL/FLUSH	FLOOR TO RIM 14 1/4"	4"	1/2"	---	KOHLER ELJER AMER-STAN	K-3575 EQUAL EQUAL	---	---	---	K-7637 EQUAL EQUAL	SEAT - OLSONITE 95 OR EQUAL BY BENEKE OR BEMIS
P-2	WATER CLOSET FLOOR MOUNTED FLUSH TANK 1.28 GAL/FLUSH	FLOOR TO RIM 16 1/2"	4"	1/2"	---	KOHLER ELJER AMER-STAN	K-3713 EQUAL EQUAL	---	---	---	K-7637 EQUAL EQUAL	SEAT - OLSONITE 95 OR EQUAL BY BENEKE OR BEMIS PROVIDE FLUSH HANDLE ON LAV SIDE OF TANK
P-3 & P-4	URINAL WALL HUNG FLUSH VALVE 0.5 GAL/FLUSH	FLOOR TO RIM P-4 17" P-3 24"	2"	3/4"	---	KOHLER ELJER SLOAN ROYAL	K-4989-T-0 EQUAL ---	---	---	---	---	PROVIDE FLOOR MOUNTED CARRIER BY JOSAM, WADE, OR ZURN IF MOUNTED ON STUD WALL
P-5	LAVATORY WALL HUNG 21'X18" 4" CENTER HOLES	FLOOR TO BOTTOM OF APRON MIN. 29"	1 1/4"	1/2"	1/2"	KOHLER ELJER CHICAGO FAUCETS	K-2005 EQUAL ---	---	803-0552	804-1180	K-7606 802-0320 100B	PROVIDE FLOOR MOUNTED CARRIER BY JOSAM, WADE, OR ZURN IF MOUNTED ON STUD WALL PROVIDE PREMOLDED PREINSULATED COVER FOR TRAP & SUPPLIES PROVIDE DRAIN OFFSET TO PROVIDE HANDICAP CLEARANCE
P-6	LAVATORY COUNTERTOP 20'X17" OVAL	COUNTER TOP	1 1/4"	1/2"	1/2"	KOHLER AMER-STAN CHICAGO FAUCETS	K-2196-4 EQUAL ---	---	803-0552	804-1180	K-7606 802-0320 100B	---
P-7	MOP SINK FLOOR MOUNTED 24'X24'X12"	FLOOR MOUNTED	3"	1/2"	1/2"	STERN-WILLIAMS FIAT CHICAGO FAUCETS	HVRBBL-ADA T5B-200 EQUAL	5B-800 ---	---	---	---	MOUNT TRIM 3'-0" ABOVE FINISHED FLOOR AND PROVIDE 4'-0" HOSE AND HOSE HOOK.
P-8	ELECTRIC WATER HEATER 30 GAL. STORAGE CAPACITY	AS HIGH AS POSS. ABV. P-7	---	3/4"	3/4"	LOCHINVAR A.O SMITH R-EEM	ESAO30KK ELJF-30 EQUAL	---	---	---	---	PROVIDE WITH 4.5KW-208V-1PH-60HZ HEATING ELEMENTS. SEE PIPING DIAGRAM.
P-9	THERMOSTATIC MIXING VALVE	ON WALL 5' ABV. FL.	---	3/4"	3/4"	LEONARD SYMMONS LAWLER	TM-20-E EQUAL EQUAL	---	---	---	---	PROVIDE THERMOMETER IN DISCHARGE PIPE. SET TEMPERATURE AT 110 DEGREES F.
P-10	SHOWER	FLOOR TO HEAD 72"	---	1/2"	1/2"	CHICAGO FAUCETS	1762	---	---	---	---	SEE DRAIN SCHEDULE FOR SHOWER DRAIN
P-11	ELECTRIC WATER COOLER - WALL HUNG - BI-LEVEL 40"	FLOOR TO RIM OF HIGH UNIT 40"	1 1/4"	1/2"	---	HALSEY-TAYLOR OASIS ELKAY	HVRBBL-ADA EQUAL EQUAL	---	---	---	---	PROVIDE WITH STAINLESS STEEL PANELS PROVIDE 1 1/4" P-TRAPS AND 3/8" SUPPLY STOP
P-12	5.5 SCULLERY SINK FLOOR MOUNTED 3 COMPARTMENT	FLOOR MOUNTED	2"	1/2"	1/2"	ELKAY JUST	14-3C16X20-0X EQUAL	---	---	---	---	PIPE CONTINUOUS 2" WASTE TO FLOOR SINK PROVIDE 1/2" SUPPLY STOPS
P-13	5.5 HAND SINK WALL HUNG	FLOOR TO BOTTOM OF APRON MIN. 29"	1 1/4"	1/2"	1/2"	ELKAY JUST CHICAGO FAUCETS	WCL19230SD EQUAL ---	---	---	---	---	PIPE 1 1/4" P-TRAP AND 3/8" SUPPLY STOPS PROVIDE WITH 4" CENTER HOLES FOR FAUCET AND GRID STRAINER & TAILPIECE



WATER HEATER PIPING DIAGRAM
NO SCALE

GENERAL PLUMBING NOTES

- ALL WORK SHALL BE DONE IN ACCORDANCE WITH APPLICABLE CODES. TO THE BEST OF THE ENGINEER'S KNOWLEDGE, ALL DRAWINGS AND SPECIFICATIONS COMPLY WITH MINIMUM EXISTING CODES.
- CONTRACTOR SHALL PROVIDE ALL WORK CUSTOMARILY INCLUDED IF NOT SPECIFICALLY CALLED FOR ON THE PLANS. ALL WORK SHALL BE IN ACCORDANCE WITH BASE BUILDING PLANS AND SPECIFICATIONS.
- CONTRACTOR SHALL VISIT THE SITE AND FAMILIARIZE HIMSELF WITH ALL DETAILS OF THE WORK AND EXISTING CONDITIONS. THE INTENT OF THESE NOTES AND MECHANICAL NOTES ON DRAWINGS IS TO CLARIFY THE SCOPE OF WORK AND ALERT CONTRACTOR OF EXISTING CONDITIONS.
- THE GENERAL CONTRACTOR IS RESPONSIBLE FOR ALL TRADES INSTALLATION SCHEDULES. FIXED WORK SUCH AS PLUMBING SHALL BE INSTALLED PRIOR TO ANY TRADE WORK THAT CAN BE EASILY RELOCATED OR OFFSET SUCH AS ELECTRICAL CONDUITS AND SMALL WATER LINES, ETC.
- CONTRACTOR SHALL REVIEW STRUCTURAL CONDITIONS BEFORE INSTALLATION TO AVOID ANY BEAM CONFLICTS AND COORDINATE PIPING ACCORDINGLY.
- ROUTE ALL PIPING CONCEALED ABOVE CEILING, WITHIN WALLS OR IN CHASES EXCEPT AS SPECIFICALLY NOTED. PATCH ALL EXISTING SURFACES AFFECTED TO MATCH ADJACENT SURFACES.
- SEE ARCHITECTURAL DRAWINGS FOR FIXTURE LOCATIONS AND MOUNTING HEIGHTS.
- SLEEVE AND FIRE STOP ALL PENETRATIONS OF RATED WALLS, CEILINGS, ETC., INCLUDING ROOF FLASH AND COUNTERFLASH ROOF PENETRATIONS.
- FIELD VERIFY EXISTING INSTALLATIONS OF ALL TRADES. MODIFY EXISTING PLUMBING SYSTEMS, WHICH ARE TO REMAIN ACTIVE, TO FACILITATE RECONNECTION AND EXTENSION UNDER THE NEW WORK.
- UTILITIES AND SERVICES INDICATED ARE TAKEN FROM VARIOUS OLD AND NEW SURVEYS, AS-BUILT RECORDS, AND FIELD INVESTIGATION. IT IS TO BE UNDERSTOOD THAT UNFORESEEN CONDITIONS PROBABLY EXIST AND NEW WORK MAY NOT BE FIELD LOCATED EXACTLY AS SHOWN ON DRAWINGS.
- PIPE ROUTING IS SCHEMATIC AND IS NOT INTENDED TO INDICATE EXACT ROUTING OR ANY ADDITIONAL OFFSETS OR FITTINGS REQUIRED FOR PROPER INSTALLATION AND CLEARANCES. CONTRACTOR TO VERIFY STRUCTURAL, MECHANICAL, ELECTRICAL INSTALLATIONS AND OBSTRUCTIONS OF ALL TRADES AND ROUTE PIPING TO AVOID ANY INTERFERENCES.
- ALL DOMESTIC WATER PIPING AND FITTINGS INSIDE THE BUILDING ABOVE SLAB SHALL BE SCHEDULE 40 CPVC WITH SOLVENT JOINTS. PIPE IN RETURN AIR PLENUMS SHALL BE TYPE L COPPER WITH SOLDER JOINTS
- ALL SANITARY AND VENT PIPING SHALL BE SCHEDULE 40 PVC OR SERVICE WEIGHT CAST IRON. NO PVC WITHIN RETURN AIR PLENUM CEILINGS.
- PROVIDE STEEL HANGER RODS, THREADED BOTH ENDS, THREADED ONE END OR CONTINUOUS THREADED AS REQUIRED.
- INSULATE ALL DOMESTIC HOT WATER PIPING WITH 1" THICK FIBERGLASS INSULATION WITH MOLDED FIBERGLASS PIPE COVERING AND CONTINUOUS VAPOR AS MANUFACTURED BY MANVILLE CORPORATION, OWENS-CORNING OR CERTAINTED. INSULATE DOMESTIC HOT WATER PIPING IN WALLS AND CHASES BEHIND FIXTURES WITH 1" THICK FIBERGLASS INSULATION

PLUMBING EXECUTION NOTES:

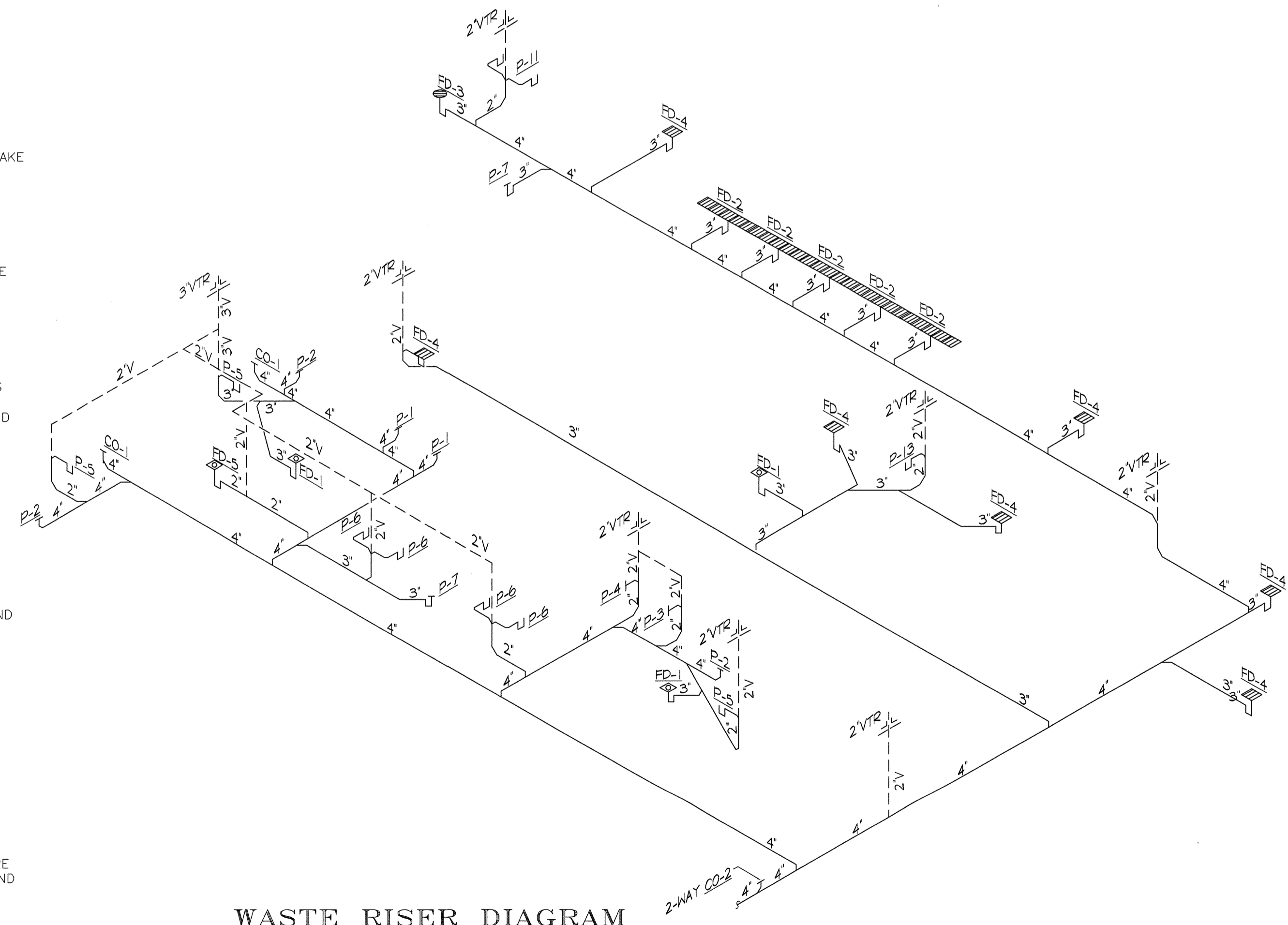
PIPE SUPPORTS & COVER PLATES

PIPE HANGERS, SUPPORTS AND INSERTS SHALL BE AS FOLLOWS:

- PIPING SHALL BE SUPPORTED INDEPENDENTLY OF ALL CONNECTIONS AND SLEEVES BY PIPE HANGERS AND PIPE SUPPORTS OF MODERN, GRINNELL, FEE & MASON, AUTO-GRIP OR CRANE MAKE PER THE FLORIDA PLUMBING CODE FOR THE PIPE MATERIAL AND SIZE SERVED.
- HANGERS AND SUPPORTS SHALL BE ARRANGED TO PERMIT FREE, UNRESTRAINED AND NOISELESS EXPANSION AND CONTRACTION OF PIPING AND MUST BE ADJUSTABLE.
- UNLESS OTHERWISE NOTED, HANGERS, SUPPORTS, COLLARS, ASSOCIATED EQUIPMENT, ETC., SHALL BE OF ALL STEEL CONSTRUCTION WITH A HEAVY PRIME COAT, EXCEPT THAT PORTION IN CONTACT WITH NON-FERROUS PIPE SHALL BE SAME CONSTRUCTION AS PIPE, PLATED WITH SAME METAL AS PIPE, OR COVERED WITH SAME METAL AS PIPE, AND SECURELY FASTENED IN PLACE.
- OVERHEAD HANGERS SHALL BE OF THE SOLID RING, SPLIT RING OR CLEVIS TYPE, WITH ADJUSTABLE STEEL RODS SECURELY SUPPORTED FROM INSERTS OR BOLTED TO STEEL CONSTRUCTION.
- PIPING HUNG CLOSE TO WALLS SHALL BE SUPPORTED BY BRACKET TYPE SUPPORTS OR FROM BRACKETS WITH SUSPENSION RING HANGERS, ARRANGED TO POSITION PIPING AWAY FROM WALLS IN CENTER OF SLEEVES, SECURELY BOLTED TO MASONRY WALLS OR STEEL CONSTRUCTION. HANGERS AND SUPPORTS WITH 4'-0" OF FLOOR MUST BE FREE OF SHARP EDGES, CORNERS AND PROJECTIONS.

INSTALLATION

- PIPING SHALL RUN TRUE, STRAIGHT, PLUMB, AND PARALLEL WITH WALLS; HAVE UNIFORM PITCH; BE CENTERED IN HANGERS OR SUPPORTS INDEPENDENT OF CONNECTIONS AND SLEEVES; BE ANCHORED AS REQUIRED TO CONTROL MOVEMENT. BE PROVIDED WITH EXPANSION JOINTS, EXPANSION LEGS, EXPANSION LOOPS, AND EXPANSION CONNECTORS WITH FLEXIBLE PIPE AND FITTINGS ARRANGED AS REQUIRED TO PERMIT FREE, UNRESTRAINED, NOISELESS EXPANSION AND CONTRACTION, AND FREEDOM FROM STRAIN ON EQUIPMENT.
- ACCESSIBLE UNIONS OR FLANGE UNIONS SHALL BE PROVIDED IN EACH BRANCH, ADJACENT TO EACH EQUIPMENT CONNECTION, EACH VALVE, OR DEVICE, OR GROUP OF VALVES OR DEVICES, AND AT LEAST EVERY 75'-0" IN MAINS.
- CONNECTIONS TO SOIL, WASTE AND DRAIN STACKS SHALL BE AT 45 DEGREES; THOSE TO VENT STACKS MAY BE AT 45 DEGREES OR 90 DEGREES.
- UNLESS OTHERWISE NOTED, SOIL, WASTE, DRAIN AND VENT STACKS SHALL BE CONCEALED IN WALLS, PIPE CHASES, OR SHAFTS WITH CLEANOUTS EXTENDED TO ACCESSIBLE LOCATIONS.
- ALL PLUMBING FIXTURES SHALL BE PROPERLY VENTED TO PREVENT SIPHONING OF TAPS. USE LEAD JACKETS FOR ROOF VENTS ONLY.
- CONTRACTOR SHALL INSTALL AIR CHAMBERS OR SHOCK ABSORBERS IN PIPING SYSTEM TO PREVENT NOISE AND DAMAGE DUE TO WATER HAMMER. ALL BRANCH PIPING SHALL HAVE ACCESSIBLE SERVICE VALVES.
- THE DOMESTIC WATER PIPING SYSTEM SHALL BE FILLED WITH A SOLUTION CONTAINING 50 PARTS PER MILLION OF CHLORINE AND ALLOWED TO STAND FOR NOT LESS THAN SIX (6) HOURS BEFORE FLUSHING. CHLORINATION SHALL BE PERFORMED AFTER ALL PIPING AND FINAL CONNECTIONS AND PRESSURE TESTS HAVE BEEN COMPLETED.
- THE PLUMBING SYSTEM SHALL BE INSTALLED IN ACCORDANCE WITH GOVERNING BUILDING CODES.

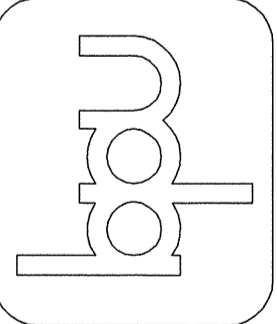


WASTE RISER DIAGRAM
NO SCALE

DATE	
REVISIONS	

BARRY P. ULLMANN
ARCHITECT, LLC
615 S. MISSOURI AVE., SUITE B 727-441-4405
CLEARWATER, FLORIDA 33756

COMMERCIAL RENOVATIONS
for DEBINE BREWERY
993 Florida Av.
PALM HARBOR, FL.



JOB NO.	201501
DRAWN BY	RAW
CHECKED BY	BPJ
DATE	01/15
SHEET NO.	P-1